

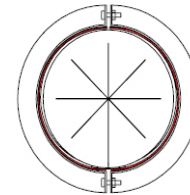


Cable Transit / Pass Through Devices

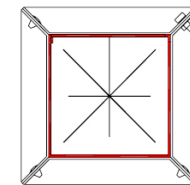
part of the **fireclamp™** firestop system

Cable Capacity Chart

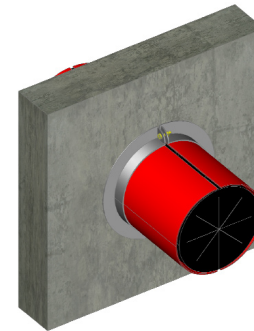
Cable Diameter		Cable Transit / Pass-Through Capacity			
mm	inches	2.5" Square	4" Square	2" Round	4" Round
3	.118	489	1155	196	1147
3.5	.138	359	848	144	843
4	.157	275	650	110	645
4.5	.177	217	513	87	510
5	.197	176	416	71	413
5.5	.217	146	344	58	341
6	.236	122	289	49	287
6.5	.256	104	246	42	244
7	.276	90	212	36	211
8	.315	69	162	28	161
9	.354	54	128	22	127
9.5	.374	49	115	20	114
10	.394	44	104	18	103
11	.433	36	86	15	85
12	.472	31	72	12	72
12.5	.492	28	67	11	66
15	.591	20	46	8	46
18	.709	14	32	5	32
20	.787	11	26	4	26
25	.984	7	17	3	17
30	1.181	5	12	2	11
35	1.378	4	8	1	8



CT120 with CT Mounting Flange Round



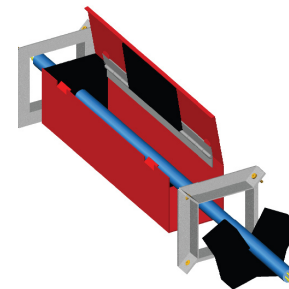
CT120 with CT Mounting Flange Square



Device Sizes and Shapes

Nominal Size	63 mm / 2.5" CT	102 mm / 4" CT	50 mm / 2" CT/R	100 mm / 4" CT/R
Dimensions	65 x 65	102 x 102	50 OD	100 OD
Shape	Square	Square	Round	Round
Finish	Red	Red	Red	Red
Length	All devices 254 mm / 10" in length Can be up to 330 mm / 13" in length			

The listed information is theoretical and are to be used for estimation purposes. Cable sizes, shapes, and diameters can affect these calculations. Accuracy of this data cannot be guaranteed.



Abesco LLC
9561 Satellite Blvd.
Unit 325
Orlando, FL 32837
USA

As part of our policy of ongoing improvement, we reserve the right to modify, alter or change product specifications without giving notice. Product illustrations are representations only. All information contained in this document is provided for guidance only, and as Abesco has no control over the installation methods of the products, or of the prevailing site conditions, no warranties expressed or implied are intended to be given as to the actual performance of the products mentioned or referred to, and no liability whatsoever will be accepted for any loss, damage or injury arising from the use of the information given of products mentioned or referred to herein.