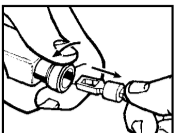
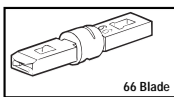
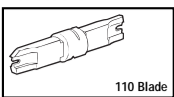
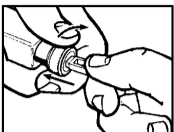


## Instructions



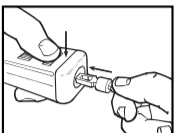
### Blade Removal

1. Twist slightly and pull.
2. Remove blade.



### Blade Insertion

1. Insert blade and align blade holding slot.
2. Push and twist into place.



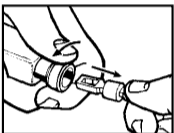
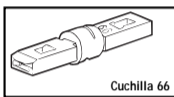
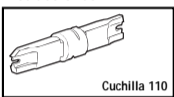
### Spare Blade Storage

1. Insert blade into hole.
2. Push blade storage buttons.
3. Blade drops into storage area.

### Changing Impact Force

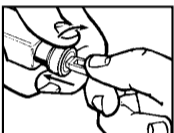
- Different size conductors may require different impact level to cut and terminate.
- Use the following suggested settings:
  - LO** For 110 connectors
  - LO** For 24 and 26 gauge conductors in 66 connectors
  - HI** For 22 and larger gauge conductors in 66 connectors

## Instrucciones



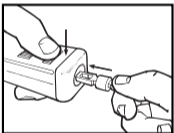
### Desmontaje de la cuchilla

1. Tuerza ligeramente y tire.
2. Quite la cuchilla.



### Introducción de la cuchilla

1. Introduzca la cuchilla y alinee la ranura de sujeción de la cuchilla.
2. Empuje y tuerza para colocar.



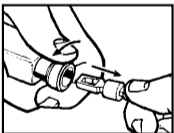
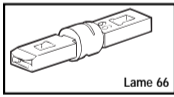
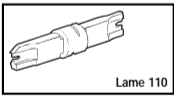
### Almacenamiento de la cuchilla de repuesto

1. Introduzca la cuchilla en el agujero.
2. Pulse los botones de almacenamiento de la cuchilla.
3. La cuchilla cae en la zona de almacenamiento.

### Cambio de la fuerza de impacto

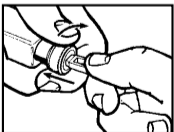
- Los conductores de distintos tamaños puede requerir un nivel de impacto diferente para cortar y terminar.
- Use los siguientes ajustes sugeridos:
  - LO** Para conectores 110
  - LO** Para conductores de calibre 24 y 26 en conectores 66
  - HI** Para conductores de calibre 22 y mayores en conectores 66

## Mode d'emploi



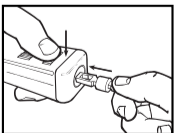
### Démontage de la lame

1. Tourner légèrement et tirer.
2. Retirer la lame.



### Introduction de la lame

1. Introduire la lame et aligner la fente porte-lame.
2. Pousser et tourner en place.



### Rangement de la lame de rechange

1. Introduire la lame dans le trou.
2. Pousser les boutons du compartiment de rangement de lame.
3. La lame tombe dans le compartiment de rangement.

### Changer la force de percussion

- Les conducteurs de calibres différents peuvent exiger des niveaux de percussion différents pour le poinçonnement et la coupe.
- Utiliser les réglages suggérés suivant :
  - LO** pour les connecteurs 110
  - LO** pour les conducteurs de calibre 24 et 26 dans les connecteurs 66
  - HI** pour les conducteurs de calibre 22 et plus dans les connecteurs 66