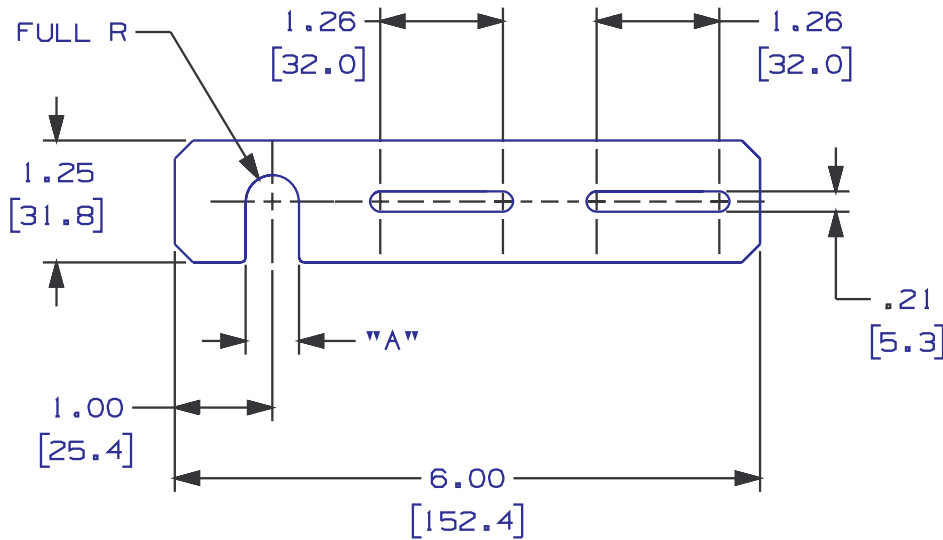


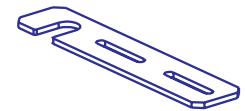
THIS COPY IS PROVIDED ON A RESTRICTED BASIS AND IS NOT TO BE USED IN ANY WAY DETRIMENTAL TO THE INTERESTS OF PANDUIT CORP.

PANDUIT P/N	"A"	WEIGHT
FTRBE12	.54 [13.7]	5.4 LB/10 PCS. (2430 G/10 PCS.)
FTRBE12M	.54 [13.7]	5.4 LB/10 PCS. (2430 G/10 PCS.)
FTRBE58	.65 [16.5]	5.3 LB/10 PCS. (2410 G/10 PCS.)



NOTES:

- SEE CURRENT CATALOG FOR ADDITIONAL PART SUFFIXES TO INDICATE COLOR AND OR PACKAGE QUANTITY.
- BRACKET ATTACHES TO EXISTING 1/2", 5/8", OR 12mm THREADED ROD (NOT INCLUDED).
- FTRBE12 AND FTRBE58 KITS CONTAIN ONE BRACKET AND TWO 10-32 x 1/2" PANHEAD SCREWS WITH LOCKWASHERS AND HEX NUTS, AND TWO 1/2" OR 5/8" SPLIT NUTS.
- FTRBE12M KIT CONTAINS ONE BRACKET, TWO M5X0.8X16mm PANHEAD MACHINE SCREWS WITH HEX NUTS AND LOCKWASHERS, AND TWO 12mm SPLIT NUTS.
- DIMENSIONS IN PARENTHESIS ARE IN METRIC.



CAD FILENAME/LAYERS D35245B0\_DC\_FTRBE\_01.PRT

PANDUIT CORP. TINLEY PARK, ILLINOIS

FIBER-DUCT BRACKET KIT (WITH EXISTING ROD)  
(FTRBE12, FTRBE12M, FTRBE58)  
CUSTOMER DRAWING

UNLESS OTHERWISE SPECIFIED,  
DIMENSIONAL TOLERANCES ARE:  
(.X) ± (.XXX) ±  
(.XX) ± .04 (1.0 ANGLES ±

UNLESS OTHERWISE SPECIFIED,  
ALL DIMENSIONS ARE GIVEN  
IN INCHES, THIRD ANGLE PROJECTION.

REV	DATE	BY	CHK	DESCRIPTION	ECN	R	CUST	SUP
I	1-19-99	DW		C. REVISED NOTE 3; D. ADDED FTRBE12M, NOTE 4. A. ADDED FTRBE12M PART; B. ADDED 12mm TO NOTE 2.	35245-15			
R	11-20-96	TPC	CEF	RELEASED TO PRODUCTION	35245-15	CEF	CEF	

DRAWN BY  
TPC  
DATE  
11-20-96  
CHK'D  
CEF

MAT'L:  
11 GAGE  
C.R.S.

SCALE  
NONE  
DRAWING NO.  
35245-15  
Dwg  
A  
SIZE