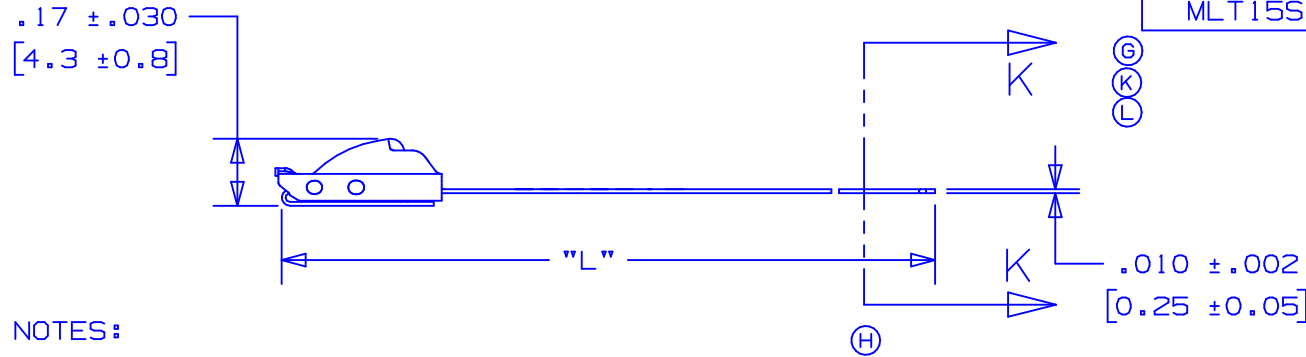


| PANDUIT PART NO. | MAX BUNDLE DIA. | PACKAGE QTY | LENGTH L ±.3 [7] ④ |
|------------------|-----------------|-------------|--------------------|
| MLT1S-CP | 1" [25] | 100 | 5.0" [127] |
| ② MLT2S-CP | 2" [51] | 100 | 7.9" [201] |
| ⑥ MLT2.7S-CP | 2.7" [69] | 100 | 10.2" [259] |
| ③ MLT4S-CP | 4" [102] | 100 | 14.3" [362] |
| MLT6S-CP | 6" [152] | 100 | 20.5" [521] |
| ⑤ MLT8S-CP | 8" [203] | 100 | 26.8" [679] |
| MLT10S-CP | 10" [254] | 100 | 33.0" [838] |
| MLT12S-Q | 12" [304] | 25 | 39.3" [998] |
| MLT14S-Q | 14" [355] | 25 | 45.5" [1156] |
| MLT15S-Q | 15" [380] | 25 | 49.2" [1250] |



NOTES:

- ① 1.) APPLICATION TOOLS - GS4MT, PPTMT, ST2MT, ST3MT, HTMT
- 2.) MINIMUM LOOP TENSILE STRENGTH - 200 LBS (889 NEWTONS) WHEN TESTED ON A 1.5" MANDREL.
- 3.) [] DENOTES DIMENSION IN MILLIMETERS
- 4.) TOLERANCES:
 .XXX = ±.010 [.25] .XX = ±.02 [.5]
 .X = ±.03 [.8] ANGLES = ±2°
- 5.) MATERIAL: 304 STAINLESS STEEL



SECTION K - K

SCALE: 8x

| | | | | | | | |
|-----|-------|------|-----|---|-------|-----|------|
| 06 | 3/05 | JAMB | BJO | ① OLD TIP CONFIGURATION REPLACED WITH NEW TIP CONFIGURATION | 12491 | CCH | JJB |
| 05 | 11/04 | JMMR | EJD | ④ REMOVED PART NO. MLT16S-Q FROM TABLE | 12192 | CCH | JJB |
| 04 | 10/04 | JAMB | EJD | ⑥ ADDED PART NO. MLT16S-Q TO TABLE. | 12179 | CCH | JJB |
| 03 | 8/04 | JAMB | DPN | ③ REMOVED "AISI NO.1 FULL RADIUSED" & REPLACED WITH "FULLY ROUNDED" | 11907 | CCH | JJB |
| 02 | 8/04 | JAMB | DPN | ② ADDED APPLICATION TOOL "ST3MT" | 11292 | CCH | JJB |
| 01 | 6/03 | JAMB | DPN | ① MIN LOOP TENSILE STRENGTH WAS 100 LBS. (445 NEWTONS) ② MAX. BUNDLE DIA. [mm] WAS [50] ③ MAX. BUNDLE DIA. [mm] WAS [101], LGTH. WAS 14.2 [361] ④ TOL. WAS ±.2 [5] ⑤ LGTH. [mm] WAS [681] ⑥ MAX. BUNDLE DIA. [mm] WAS [68] ⑦ REMOVED PART NO. MLT16S-Q | 10568 | CCH | JJB |
| REV | DATE | BY | CHK | DESCRIPTION | ECN # | PM | CUST |

PANDUIT

CORP.

TINLEY PARK, ILLINOIS

METAL LOCKING TIE
STANDARD SERIES-304 STAINLESS STEEL

| | | | |
|------------------|--------------|-------------|-----------------------|
| DRAWN BY JAMB | CHK'D DPN | SCALE 2x | DRAWING NO. S41119 |
|------------------|--------------|-------------|-----------------------|

S41119_06