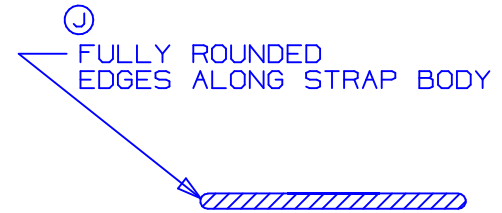
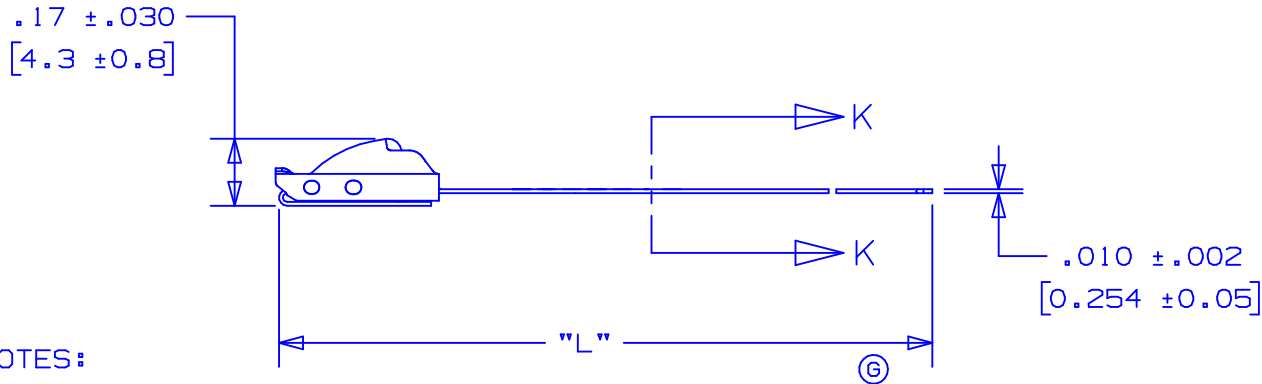


| PANDUIT PART NO. | MAX BUNDLE DIA. | PACKAGE QTY | LENGTH L ±.3 [7] (E) |
|------------------|-----------------|-------------|----------------------|
| MLT1S-CP316 | 1" [25] | 100 | 5.0" [127] |
| MLT2S-CP316 | 2" [51] | 100 | 7.9" [201] |
| MLT2.7S-CP316 | 2.7" [69] | 100 | 10.2" [259] |
| MLT4S-CP316 | 4" [102] | 100 | 14.3" [362] |
| MLT6S-CP316 | 6" [152] | 100 | 20.5" [521] |
| MLT8S-CP316 | 8" [203] | 100 | 26.8" [679] |
| MLT10S-CP316 | 10" [254] | 100 | 33.0" [838] |



SECTION "K-K"
SCALE:8x

NOTES:

- 1.) APPLICATION TOOLS - GS4MT,PPTMT,ST2MT,ST3MT,HTMT
- 2.) MINIMUM LOOP TENSILE STRENGTH - 200 LBS. (889 NEWTONS) WHEN TESTED ON A 1.5" MANDREL.
- 3.) [] DENOTES DIMENSION IN MILLIMETERS
- 4.) TOLERANCES:
 .XXX = ±.010 [.25]
 .XX = ±.02 [.5]
 .X = ±.03 [.8]
 ANGLES = ±2°
- 5.) MATERIAL: 316 STAINLESS STEEL

| 04 | 3/05 | JAMB | BJO | (K) HEAD WIDTH DIM. WAS .252±.020 [6.4±0.50] (L) OLD TIP CONFIGURATION REPLACED WITH NEW TIP CONFIGURATION | 12491 | CCH | JJB |
|-----|-------|------|-----|---|-------|-----|------|
| 03 | 8/04 | JAMB | DPN | (J) REMOVED "AISI NO.1 FULL RADIUS" & REPLACED WITH "FULLY ROUNDED" | 11907 | CCH | JJB |
| 02 | 11/03 | JAMB | DPN | (G) ADDED APPLICATION TOOL "ST3MT" (H) REMOVED "316" DESIGNATION FROM PANDUIT I.D. | 11292 | CCH | JJB |
| 01 | 6/03 | JAMB | DPN | (A) ADDED PART NO. MLT2.7S-CP316 (B) MIN. LOOP TENSILE STRENGTH WAS 100 LBS. [445 NEWTONS] (C) MAX. BUNDLE DIA. [mm] WAS [50] (D) MAX. BUNDLE DIA. [mm] WAS [101], LGTH. WAS 14.2" [361] (E) TOL. WAS ±.2 [5] (F) LENGTH [mm] WAS [681] | 10568 | CCH | JJB |
| 00 | 9/02 | JAMB | DPN | RELEASED | 10054 | CCH | JJB |
| REV | DATE | BY | CHK | DESCRIPTION | ECN # | PM | CUST |

PANDUIT

CORP.

TINLEY PARK, ILLINOIS

METAL LOCKING TIE
STANDARD SERIES-316 STAINLESS STEEL

| | | | |
|------------------|--------------|-------------|-----------------------|
| DRAWN BY JAMB | CHK'D DPN | SCALE 2x | DRAWING NO. S41120 |
|------------------|--------------|-------------|-----------------------|

S41120_04