

USB to HDMI® Adapter

DEAR CUSTOMER

Thank you for purchasing this product.

For optimum performance and safety, please read these instructions carefully before connecting, operating or adjusting this product. Please keep this manual for future reference. 1 Year Warranty.

FEATURES:

- Allows for the connection of one or more HDMI enabled monitor, LCD, or projector to a computer with a USB 2.0 port
- Supports High Definition Resolutions up to 1080p
- Supports Extended and Mirrored Modes
- Monitor can be added or removed without a complete system reboot

PACKAGE CONTENTS

Before attempting to use this unit, please check the packaging and make sure the following items are contained in the shipping carton:

1. USB to HDMI Adapter
2. Driver CD
3. USB Cable
4. Product Manual

CONNECT AND OPERATE

1. Installing the Driver

Caution: DO NOT connect the adapter to your computer before installing the provided driver. Insert the provided CD into your disc drive and the installer program will run automatically when the Driver CD is inserted. Then follow the on-screen prompts to complete the installation.

For Windows Vista® / Windows® 7 users:

- A. Please click on Run Setup.exe to execute the installer program.
- B. If you encounter a User Account Control dialog box when attempting to install a program, enter an administrator password or click Allow/ Yes to start the installation.
- C. You may see the License agreement screen prompted. Please click on I Accept to start the Driver installation.
- D. When prompted to restart your computer, click Yes.

For Windows® XP users:

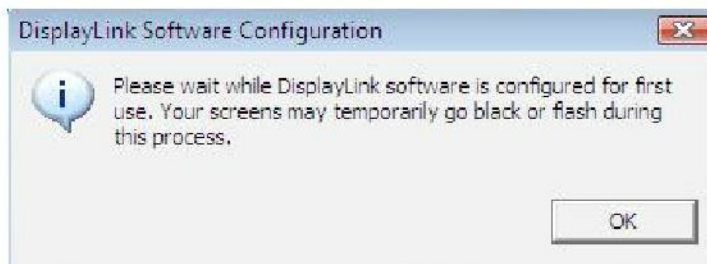
- A. You may see the License agreement screen prompted. Please click on I Accept to start the Driver installation.
- B. When prompted to restart your computer, click Yes.

For Mac OS® users:

- A. Insert the provided CD into your disc drive. Locate and double-click the Driver folder > Mac folder > DisplayLink Installer 1.6b3.dmg to launch the setup program
- B. Select "DisplayLink Software Installer" to begin installing the DisplayLink Driver on your Mac.
- C. Click Continue to install this software.
- D. Please click Continue after reading Software License Agreement.
- E. Click Agree to continue the installation and quit the installer.
- F. Click Install to perform a standard installation of this software on the disk "Macintosh HD".
- G. The installation was successful; please click Restart to finish installing the software.

2. Making the Connection

Please connect the USB to HDMI Adapter to your monitor or computer first, you will see the DisplayLink Manager Icon in system tray that looks like a monitor



Please wait while DisplayLink software is configured for first use. Your screens may temporarily go black or flash during this process. Please click "OK" to start to use USB to HDMI Adapter.

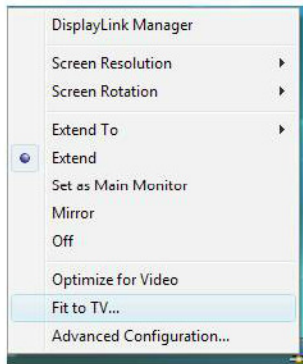
CONNECT AND OPERATE CONTINUED

3. Fit to TV Function

"Fit to TV" function is for HDMI TV connections. A new user interface option allows the correction of overscan on TVs when using a USB to HDMI adapter. The "Fit to TV" function allows a user to change the size of their Windows desktop to allow the entire desktop to be viewed.

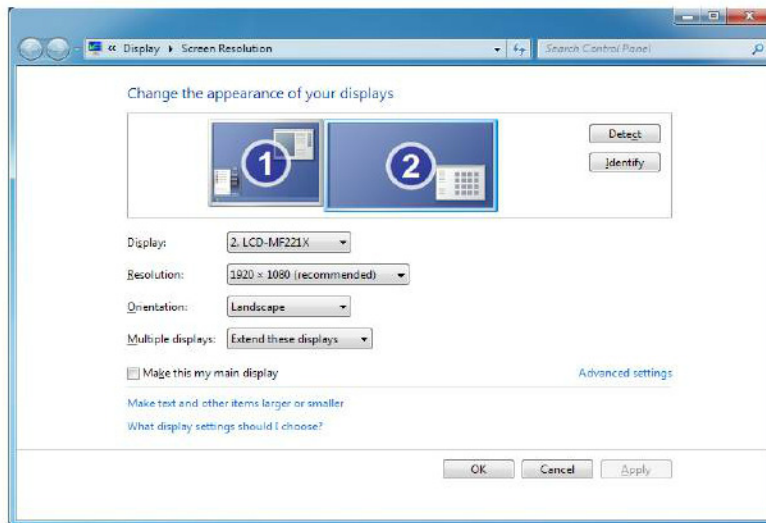
4. Changing the Display Mode

There are several ways you can utilize the monitor attached on the adapter. The add-on monitor can be configured to use either "mirror mode", "extend mode" or "primary mode". On Windows® XP and Windows Vista®, you can click on the DisplayLink Device icon to control the display adapter and select configuration Display Properties as below.



- Extend Mode: The screen is part of the extended desktop.
- Mirror Mode: The screen copies the contents of the primary screen.
- Off Mode: The screen is black.
- Set as Main Monitor: The screen is the primary screen.

On Windows® 7, you can change the appearance of your displays through the Window. Moreover, additional controls are available in Windows® 7: Orientation (Portrait, landscape, rotated portrait, rotated landscape)



To control the behavior of an attached DisplayLink device (or screen), it is possible to use Windows Key+P to display a menu (and cycle through it) to allow: Disconnect Projector, Duplicate, Extend, Projector Only.

